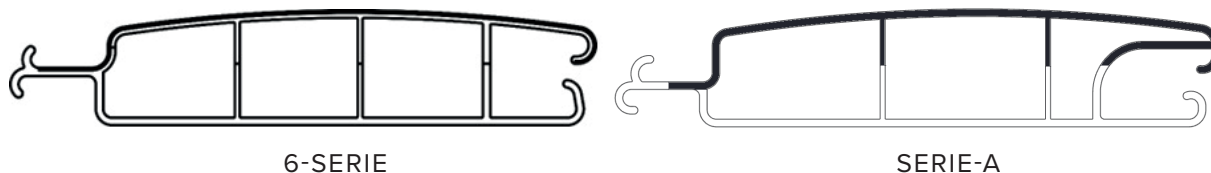


	PVC 6-serie	PC 6-serie / PC serie-A
lameldikte in mm	14	14
lamelbreedte in mm	60	60
gewicht in kg per m <sup>2</sup>	4,4	3,8 solar
maximum oppervlakte in m <sup>2</sup>	90	90

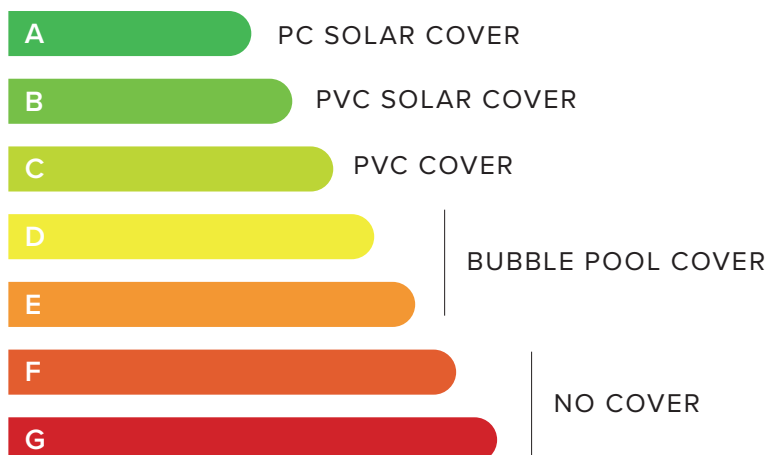


### ROLL-UP DIAMETER 6 REEKS

length (mm)	IN mm SHAFT ø 140mm	IN mm SHAFT ø 170mm	number of slats
4000	325	335	67
5000	355	365	83
6000	380	395	100
7000	405	420	117
8000	430	440	133
9000	455	460	150
10000	475	480	167
11000	495	500	183
12000	515	520	200
13000	535	540	217
14000	555	560	233
15000	575	580	250

### ENERGIELABEL

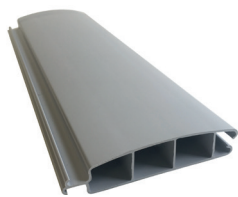
NF EN 17645



**PVC 6-serie:**



wit

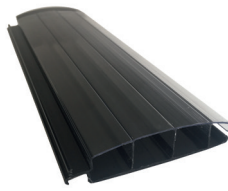


licht grijs

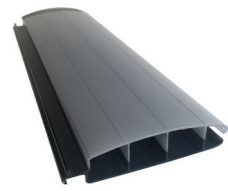


solar grijs

**PC 6-serie:**



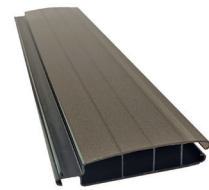
solar clear



solar metallic



solar black smoked

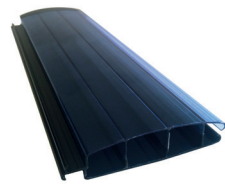


solar bronz

**PC serie-A:**



solar carbon



solar blue



**STAALMAP VERKRIJGBAAR OP AANVRAAG**

